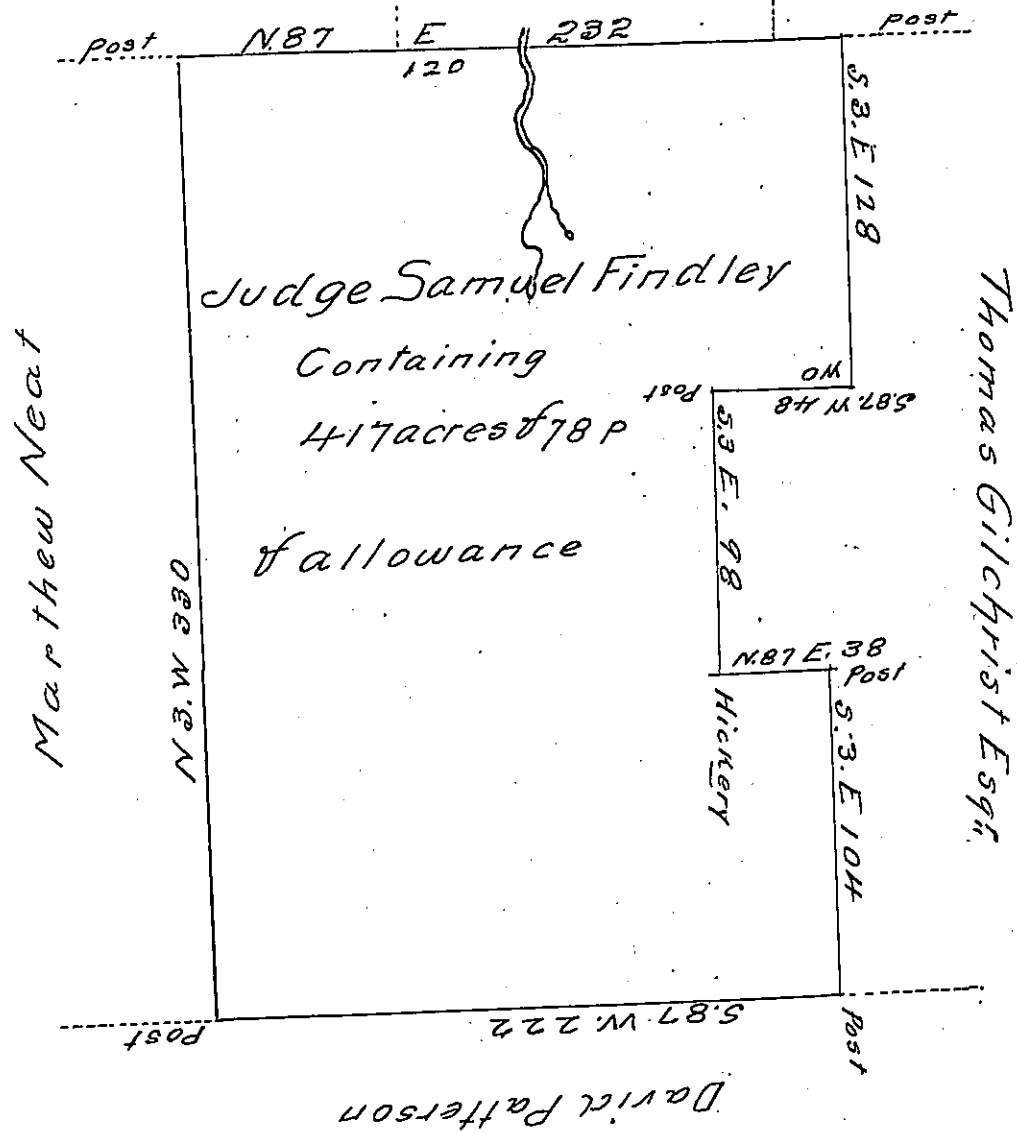


Walter Lindsey Charles Campbell Rev John McPherran



The above is a Draft of a tract of Land Surveyed to Samuel Findley Esq; in pursuance of his actual Settlement and Improvement Containing 417 acres and 78 perches & allowance of six per cent &c. Situate in Centre Township Butler County and from from the Books and Records in my possession it Does not appear to be appropriated or Surveyed for the Redemption of Depreciation Certificates or otherwise and that I know of no person Claiming or Disputing with him about the same Certified this 24 Day of June 1812

Thos Graham D.S.

Note.— Judge Findley is actually Residing on the Land with his family when surveyed which was the 23 Day of June 1812

Thos Graham D.S.

IN TESTIMONY that the above is a copy of the original remaining on file in the Department of Internal Affairs of Pennsylvania, made conformably to an Act of Assembly approved the 16th day of February, 1833, I have hereunto set my Hand and caused the Seal of said Department to be affixed at Harrisburg, this twentieth day of September 1904

*Isaac D. Brown*  
Secretary of Internal Affairs.